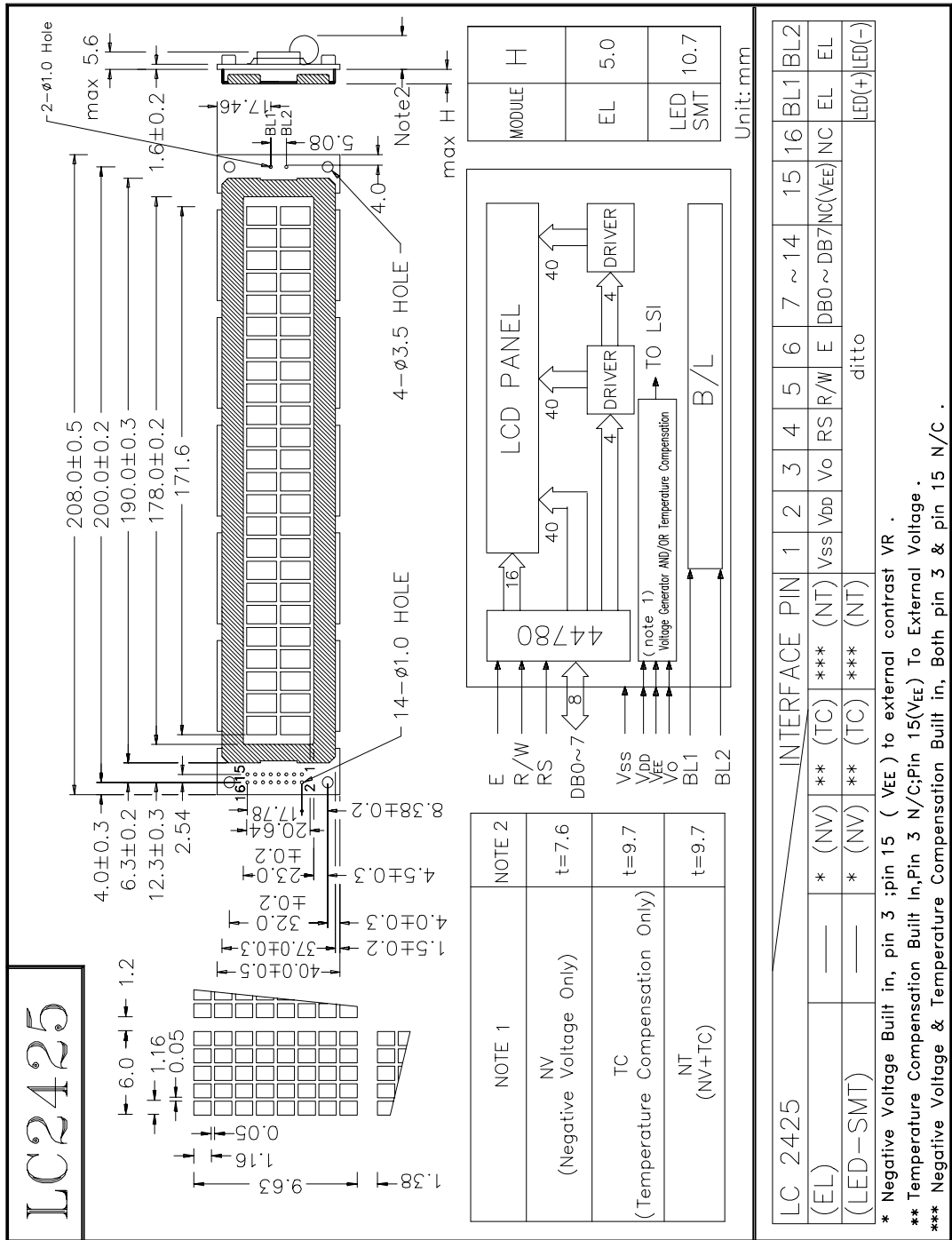


1. LCM Drawing



2. Electrical spec

LC2425

24 Characters X 2 Lines
1/16 DUTY 5x8Font

ELECTRICAL CHARACTERISTICS

T_a = 25°C V_{DD} = 5.0 ± 0.25 v

Input "High" Voltage (V_{IH}) 2.2 V min

Input "Low" Voltage (V_{IL}) 0.6 V max

APPLICABLE FOR -LEP

Supply Current, (I_{DD}) Typ., mA

	<u>TN</u> <u>TEMPERATURE</u>		<u>STN</u> <u>TEMPERATURE</u>	
	<u>NORMAL</u>	<u>WIDE</u>	<u>NORMAL</u>	<u>WIDE</u>
Supply Current, (I _{DD}) Typ., mA	N/A	N/A	3	3

Recommend LCD drive Voltage:

(V _{DD} -V _O) at T _a = -20°C, Volts	N/A	N/A	N/A	7.6
T _a = 0°C	N/A	N/A	5.0	7.3
T _a = 25°C	N/A	N/A	4.8	7.0
T _a = 50°C	N/A	N/A	4.5	6.7
T _a = 70°C	N/A	N/A	N/A	6.4

ABSOLUTE MAXIMUM RATINGS

	<u>NORMAL</u> <u>TEMPERATURE</u>		<u>WIDE</u> <u>TEMPERATURE</u>	
	<u>MIN</u>	<u>MAX</u>	<u>MIN</u>	<u>MAX</u>
Input Voltage (V _I) V	0	V _{DD}	0	V _{DD}
Supply for Logic (V _{DD} -V _{SS}) V	0	7	0	7
Supply for LCD (V _{DD} -V _O) V	0	10	0	10
Operating Temperature T _{OP} , °C	0	+50	-20	+70
Storage Temperature T _{ST} , °C	-20	+70	-30	+80

OPTION

BACKLIGHT

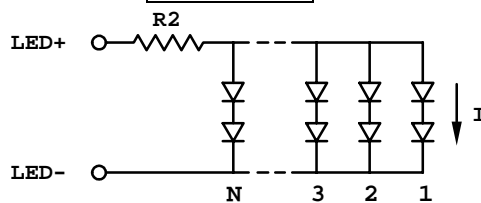
-BEXX -- EL
-BLSXX -- LED SMT

INPUT VOLTAGE & CURRENT

100 V_{RMS} (400-800) Hz; 13.0mA
+ 5V DC; 640 mA R2 = 1 Ohm 2 W

*R2: Suggest BL current limit resistor on customer board

SMT LED



N = 64, I = 10 mA

----- Single +5V for wide temperature operation -----

SINGLE +5V OPERATION only

-VNV
-- V_{EE} self-generate --

TEMPERATURE COMPENSATION

-VNVTC (-VNT)
-- V_{DD}-V_O self-generate & compensated