



2. Electrical spec

**LC2415**

24 Characters X 1 Lines  
1/16 DUTY 5x8Font

**ELECTRICAL CHARACTERISTICS**

T<sub>a</sub> = 25°C V<sub>DD</sub> = 5.0 ± 0.25 v

Input "High" Voltage (V<sub>IH</sub>) 2.2 V min

Input "Low " Voltage (V<sub>IL</sub>) 0.6 V max

**APPLICABLE FOR -LEP**

	<u>TN</u>		<u>STN</u>	
	<u>TEMPERATURE</u>		<u>TEMPERATURE</u>	
	<u>NORMAL</u>	<u>WIDE</u>	<u>NORMAL</u>	<u>WIDE</u>
Supply Current, (I <sub>DD</sub> )Typ., mA	N/A	N/A	3	N/A
Recommend LCD drive Voltage:				
(V <sub>DD</sub> -V <sub>O</sub> ) at T <sub>a</sub> = -20°C, Volts	N/A	N/A	N/A	6.8
T <sub>a</sub> = 0°C	N/A	N/A	4.9	6.4
T <sub>a</sub> = 25°C	N/A	N/A	4.5	6.2
T <sub>a</sub> = 50°C	N/A	N/A	4.1	5.9
T <sub>a</sub> = 70°C	N/A	N/A	N/A	5.6

**ABSOLUTE MAXIMUM RATINGS**

	<u>NORMAL</u>		<u>WIDE</u>	
	<u>TEMPERATURE</u>		<u>TEMPERATURE</u>	
	<u>MIN</u>	<u>MAX</u>	<u>MIN</u>	<u>MAX</u>
Input Voltage (V <sub>I</sub> ) V	0	V <sub>DD</sub>	0	V <sub>DD</sub>
Supply for Logic (V <sub>DD</sub> -V <sub>SS</sub> ) V	0	7	0	7
Supply for LCD (V <sub>DD</sub> -V <sub>O</sub> ) V	0	10	0	10
Operating Temperature T <sub>OP</sub> , °C	0	+50	-20	+70
Storage Temperature T <sub>ST</sub> , °C	-20	+70	-30	+80

**OPTION**

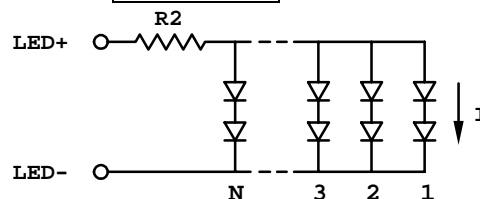
**BACKLIGHT**

- BEXX -- EL
- BLSXX -- LED SMT

**INPUT VOLTAGE & CURRENT**

100 V<sub>RMS</sub> (400-800) Hz; 11.0mA  
+ 5V DC; 640 mA R2 = 1.2 Ohm 1 W  
\*R2: Suggest BL current limit resistor on customer board

**SMT LED**



N = 64 , I = 10 mA

..... Single +5V for wide temperature operation .....

**SINGLE +5V OPERATION** only

-- not available --

**TEMPERATURE COMPENSATION**

-- not available --